

Features

- Cartridge style check and shuttle valves
- Cartridge for use in custom designed manifold
- Optional aluminum anodized body available
- Industry standard cartridge thread
- For use with mineral based oils
- From -30°C to 120°C operation



C-Check



S-Shuttle

Ordering Details

V	Valve
C	Cartridge
C-	Valve type: C = Check Valve S = Shuttle Valve
08-2-	Cavity Size (page 2)
O6-	Body Port Size (blank for cartridge only)
4-	Spring Opening Pressure (blank for "S" shuttle valve):
1	Series

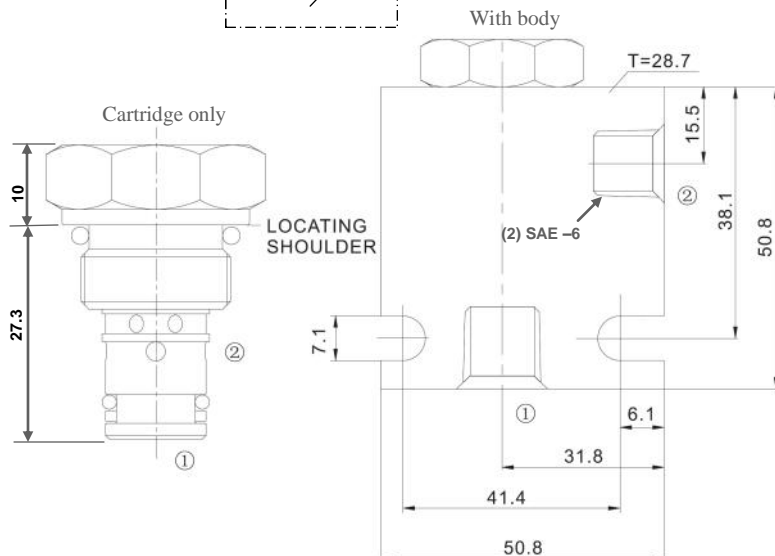
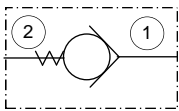
Code	Spring opening pressure (PSI)
4	4.3
10	10
30	30
60	60

Valve Type	Port Size, SAE O-ring	Cavity Size Code	Max. Flow lpm	Max. Pressure Cartridge Bar	Max. Pressure Body Bar	Leakage at Max. Pressure cc/min
C-Check	6	08-2	20	250	210	0.1
	8	10-2	75	240	210	≤0.1
S-Shuttle	6	08-3	18.9	240	210	5 drops/min.

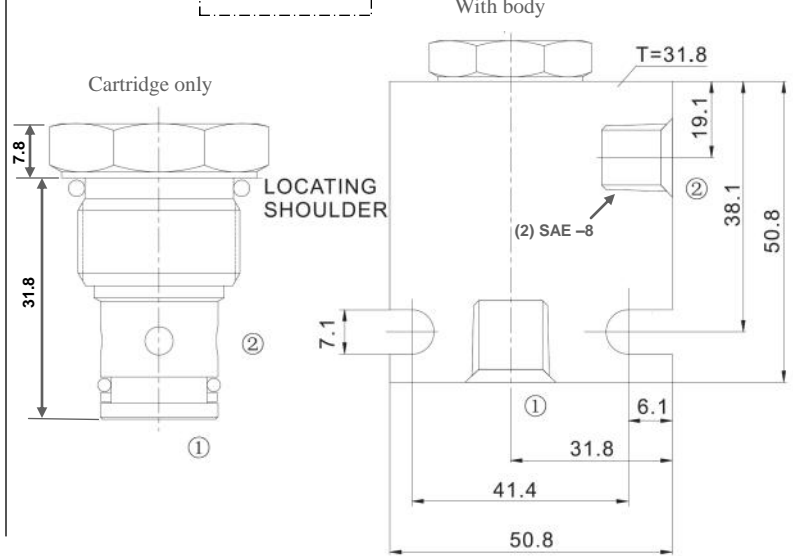
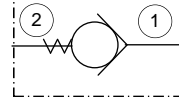
Example Part Number: VCC-08-2-O6-4-1

Dimensions (mm)

VCC-08-2...

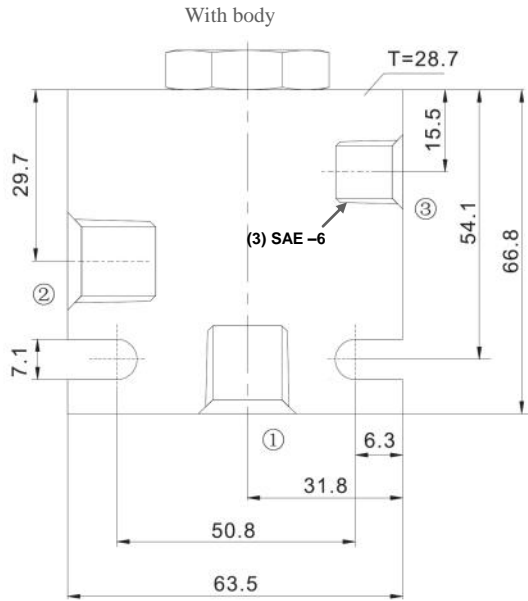
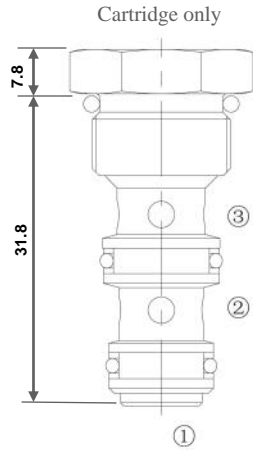
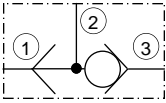


VCC-10-2...



Dimensions (mm)

VCS-08-3...



Cavity Dimensions (mm)

